

Use a dense, split resistant wood for your featherboards. White Oak and Hard Maple are good choices.

Mill a piece of stock long enough to yield several slot keys. Stock should slip fit in your table slots.

Layout and rout relief slots for several slot keys on the long piece of stock. Cutting the slots on long stock is safer than handling short pieces.

Drill 1/4" hole and countersink for a 1/4" flat head bolt.

Cut the slot keys to 4" long. Split the key through the center using a scrollsaw, or a hack saw blade.

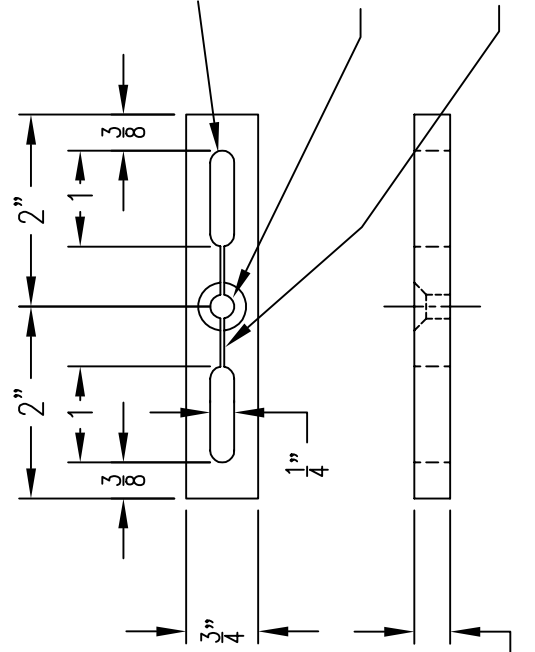


Table slots vary in size. Plane the key width to slip fit in your table slots.

Plane to about 1/64" less than the depth of your table slots.

Your favorite knob, or use a  
1/4-20 hex nut to clamp.

